

# SMART JODI

## LITHIUM ION BATTERY + LUXE NEW INVERTER WITH 5 YEARS WARRANTY



### MICROTEK SMART JODI: LITHIUM ION BATTERY + LUXE NEW INVERTER

#### Extra Warranty Scheme:

Consumers will get 5 Years warranty on purchase of both Lithium Ion Battery & Luxe New Inverter.

**Process For availing this offer via Retailer:** Consumers need to get the Combo's Warranty Registered in Microtek Partner App. Retailers need to Login in their Partner App. 1. Choose Retailer Sale. 2. Validate Consumers Mobile No. through OTP. 3. select date of sale, 4. Choose product type as "Inverter & Battery Combo". 5. Scan Luxe new series HUPS first & then Lithium Battery. 6. Click "Go to Paperless Warranty". 7. Enter consumer name & pin code. 8. Select warranty type & upload required documents & submit.



CONSUMER OFFER

Valid on Purchase Between  
11th Nov. to 31st Mar. 2026

**SMART JODI - SMART PRICE**

**40%**

**DISCOUNT ON MRP**



**MICROTEK SMART JODI: LITHIUM ION BATTERY + LUXE NEW INVERTER**

**HIGHLY  
DISCOUNTED  
PRICES**

LITHIUM ION BATTERY + LUXE NEW INVERTER COMBO	HUPS MRP	LI ION Battery MRP	Combo MRP	Combo Offer Price
LUXE NEW 1000 12V SW + LI ION BATTERY MLB1280060 (12.8V/100AH)	9490	29990	39480	23500
LUXE NEW 1200 12V SW+ LI ION BATTERY MLB1280060 (12.8V/100AH)	11690	29990	41680	25000
LUXE NEW 1400 12V SW + LI ION BATTERY MLB1280060 (12.8V/100AH)	12690	29990	42680	25500
Luxe Wifi 1400 12V SW+ LI ION BATTERY MLB1280060 (12.8V/100AH)	13190	29990	43180	26000

## Experience Smart Performance !

Engineered for reliability — delivers over 3 hours of powerful backup on a 400W load.

Perfect choice for customers who demand efficiency, endurance, and complete peace of mind.



### LOAD APPLICATION CHART LUXE NEW INVERTER

LUXE LCD DISPLAY PURE SINEWAVE MODELS	
MODELS	LOAD HANDLING
LUXE NEW 1000/12V SW	500W Mixer Grinder ( Or Equivalent Appliance Load) + Kitchen Chimney + Fan + Light + Mobile Charging + Laptop Charging + Wi-Fi Router
LUXE NEW 1200/12V SW	600W Mixer Grinder ( Or Equivalent Fridge/ Washing Machine/ Cooler & other Appliance Load)+ Kitchen Chimney + Fan + Light + TV + Mobile Charging + Laptop Charging + Wi-Fi Router
LUXE NEW 1400/12V SW / LUXE WIFI 1400/12V SW	750W Mixer Grinder ( Or Equivalent Fridge/ Washing Machine/ Cooler & other Appliance Load) + Kitchen Chimney + Fan + Light + TV + Mobile Charging + Laptop Charging + Wi-Fi Router

\*Load chart given above is for reference purpose only, actual load may vary as per appliances specifications. Total load should not exceed product wattage.



# SMART JODI - SMART FINANCE OPTIONS

# 0%

## INTEREST

## WITH ZERO DOWN PAYMENT



### MICROTEK SMART JODI: LITHIUM ION BATTERY + LUXE NEW INVERTER

#### PER MONTH EMI IN FINANCE SCHEME

Finance Options		6/0			8/2			9/3			12/4		
PRODUCT MODELS	OFFER PRICE	EMI	DOWN PAYM.	PROC. FEE	EMI	DOWN PAYM.	PROC. FEE	EMI	DOWN PAYM.	PROC. FEE	EMI	DOWN PAYM.	PROC. FEE
LUXE NEW 1000 12V SW + Lion Battery	23500	3917	0	0	2938	5875	149	2611	7833	149	1958	7832	249
LUXE NEW 1200 12V SW+ Lion Battery	25000	4167	0	0	3125	6250	149	2778	8334	149	2083	8332	249
LUXE NEW 1400 12V SW + Lion Battery	25500	4250	0	0	3188	6375	149	2833	8499	149	2125	8500	249
Luxe Wifi 1400 12V SW+ LION Battery	26000	4333	0	0	3250	6500	149	2889	8667	149	2167	8668	249

\*EMI & Down Payment mentioned here is as per offer price, actual EMI & Down Payment may vary as per actual Invoice & Loan amount.



# LUXE

LCD HOME UPS

## NEXT GEN

LITHIUM COMPATIBLE SERIES



SMART  
LCD DISPLAY



DISPLAYS  
FOLLOWING



RUNNING  
LOAD  
PERCENTAGE  
↑  
BATTERY  
RECHARGE  
TIME  
↑  
BATTERY  
BACKUP TIME



COMPATIBLE WITH  
ALL BATTERY TYPES  
Lithium, SMF, Tubular,  
Local & Flat Plate



VARIABLE CHARGING -  
4 Level Selection  
10A | 12A | 15A | 20A



UPS & INVERTER  
MODE

For Running IT & Home Load



IN-BUILT BYPASS  
SWITCH

Enables to Isolate the UPS from  
Mains, whenever needed

LUXE WIFI

# LITHIUM-ION BATTERY

(LFP CHEMISTRY)

## MLB1280060

1280WH  
100Ah/12.8V

5 year  
Warranty\*



**SCT** SYNC CHARGE TECHNOLOGY  
FOR FASTER, LONGER,  
AND SAFER POWER

Powered by

SMART

# BMS

Battery Management System

## THE FUTURE OF POWER

### BUILT FOR SAFETY

### ZERO MAINTENANCE

### POLLUTION FREE

### LONGER LIFE



FAST CHARGING

Supports High  
Current Charging



COMPACT

Lightweight &  
Compact Design



HIGH EFFICIENCY

Low internal resistance  
& High Energy  
Conversion Efficiency

# LUXE

LCD HOME UPS

## NEXT GEN

### LITHIUM COMPATIBLE SERIES



#### ADVANCED RESETTABLE CIRCUIT BREAKER

Total Safety of  
connected Appliances



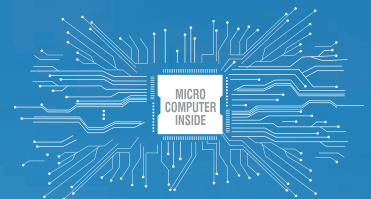
#### UPS & INVERTER MODE

For Running IT & Home Load



#### VARIABLE CHARGING -

4 Level Selection  
10A | 12A | 15A | 20A



#### SMART BIGGER LCD DISPLAY



DISPLAYS  
FOLLOWING



#### HIGH & STANDARD CHARGING OPTION

For Quick Battery Charging



#### COMPATIBLE WITH ALL BATTERY TYPES

Lithium, SMF, Tubular,  
& Local/Flat Plate



#### IN-BUILT BYPASS SWITCH

Enables to Isolate the UPS from  
Mains, whenever needed

## TECHNICAL SPECIFICATIONS

LUXE LCD SINEWAVE UPS				
Product	LUXE NEW 1000/12V SW	LUXE NEW 1200/12V SW	LUXE NEW 1400/12V SW	LUXE NEW 1900/24V SW
Input Voltage	Inv Mode: 80V~290V UPS Mode: 180V~265V			
Output Voltage on Mains mode	Same as input			
Output Voltage on Backup mode	230V $\pm$ 10%@DC = 12V			
Output frequency on Backup mode	50 Hz $\pm$ 0.5 Hz			
Switching from Mains to UPS and from UPS to Mains	Automatic			
Output waveform on Mains mode	Same as Input			
Output waveform on Backup mode	Pure Sinewave			
Battery Charging Current	10A/12A/15A/20A variety of current types can be selected			
Battery Type Selection Options	TUB/SMF/FLA-LC/Lithium			
Protections	Overload/Short Circuit/Over Charge/DC High Voltage/Over Temp. / Backfeed			
UPS Transfer Time	$\leq$ 15msec.			
Browns Out Mains Voltage	80V $\pm$ 10V			
Technology	Micro Computer Based Intelligent Control Design			
Auto Reset Feature	Yes			
Operating Temperature	0~45°			

**NOTE:** \*Power Factor may vary depending upon the Load. \* Because of a policy of continuous product improvement, specifications are subject to change without notice.





**LUXE**  **WIFI**

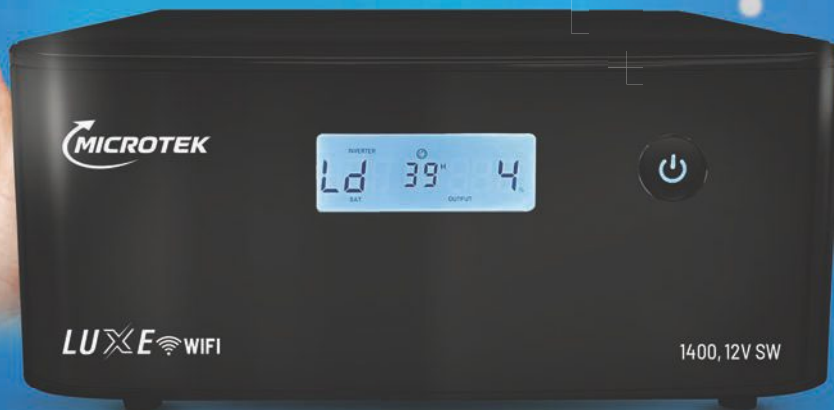
**NEXTGEN**

**LITHIUM COMPATIBLE SERIES**

BATTERY  
BACKUP  
TIME

RUNNING  
LOAD  
PERCENTAGE

BATTERY  
RECHARGE  
TIME



VARIABLE CHARGING -  
4 LEVEL SELECTION  
10A | 12A | 15A | 20A



MONITOR AND CONTROL  
THE UPS ANYTIME



IN-BUILT BYPASS  
SWITCH



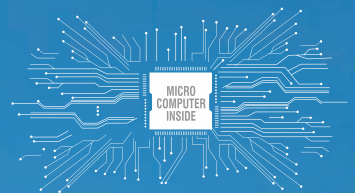
THERMAL  
PROTECTION



COMPATIBLE WITH ALL  
BATTERY TYPES: LITHIUM, SMF,  
FLAT & TUBULAR



REAL TIME ALERT  
NOTIFICATION



**SMART BIGGER  
LCD DISPLAY**



**DISPLAYS FOLLOWING**



Battery  
Charging  
Time



Backup  
Time



Load  
Running  
Status



## TECHNICAL SPECIFICATIONS

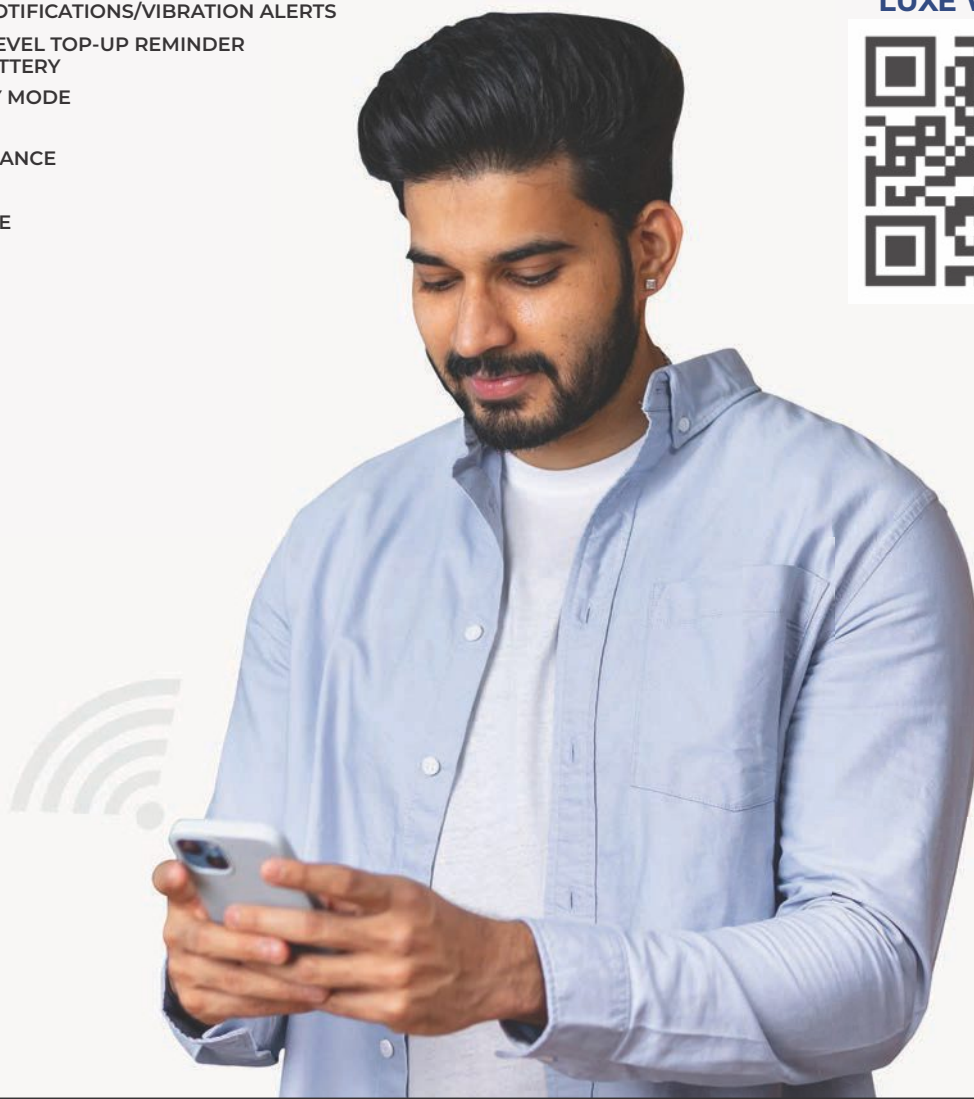
LUXE WIFI UPS	
Input Voltage	Inv Mode: 80V~290V UPS Mode: 180V~265V
Output Voltage on Mains mode	Same as input
Output Voltage on Backup mode	230V $\pm$ 10%@DC = 12V
Output frequency on Backup mode	50 Hz $\pm$ 0.5 Hz
Switching from Mains to UPS and from UPS to Mains	Automatic
Output waveform on Mains mode	Same as Input
Output waveform on Backup mode	Pure Sinewave
Battery Charging Current	10A/12A/15A/20A variety of current types can be selected
Battery Type Selection Options	TUB/SMF/FLA-LC/Lithium
Protections	Overload/Short Circuit/Over Charge/DC High Voltage/Over Temp. / Backfeed
UPS Transfer Time	$\leq$ 15msec.
Browns Out Mains Voltage	80V $\pm$ 10V
Technology	Micro Computer Based Intelligent Control Design
Auto Reset Feature	Yes
Operating Temperature	0~45°

**NOTE:** \*Power Factor may vary depending upon the Load. \* Because of a policy of continuous product improvement, specifications are subject to change without notice.

## WIFI FEATURES:

- ◆ MONITOR LOAD PERCENTAGE
- ◆ MONITOR CHARGING/DISCHARGING PERCENTAGE AND TIME
- ◆ SELECT UPS/INVERTER MODE
- ◆ ENABLE FORCED MAINS CUT/HIGH POWER MODE
- ◆ RECEIVE ALARM NOTIFICATIONS/VIBRATION ALERTS
- ◆ BATTERY WATER LEVEL TOP-UP REMINDER FOR LEAD ACID BATTERY
- ◆ CONTROL HOLIDAY MODE
- ◆ TURBO CHARGING
- ◆ BACKUP PERFORMANCE
- ◆ MUTE BUZZER
- ◆ HIGH POWER MODE

**DOWNLOAD  
THE MICROTEK  
LUXE WIFI APP**





# LITHIUM-ION BATTERY

(LFP CHEMISTRY) - 12.8V 100AH

FOR LONGER LIFE



**SCT** | SYNC CHARGE TECHNOLOGY  
FOR FASTER, LONGER,  
AND SAFER POWER



**MLB1280060**

1280WH  
100Ah/12.8V | 5 year  
Warranty\*



Smart Energy Balancing



Faster Recharge



Wall Mounted



Compact & Lightweight



Zero Maintenance



Higher Cycle Life

# TECHNICAL DATASHEET

12.8V 100Ah LiFePO4 Battery



## Battery Specifications:

Parameters	Specifications
Model	MLB1280060
Battery Type	Lithium Iron Phosphate (LiFePO4)
Nominal Voltage	12.8 V
Nominal Capacity	100 Ah
Energy	1.28 kWh
Cell Configuration	4S1P
Cell Type	Prismatic LiFePO4
Cycle Life	> 3500 cycles @ 80% DOD
Design Life	10+ years
Weight	Approx 14 kg
Dimensions mm (L x W x H)	360x145x275 ± 2mm
Operating Voltage Range	11.2 V – 14.4 V
Max Charge Cut-off Voltage	14.4 V
Discharge Cut-off Voltage	11.2 V
Standard Charge Current	30 A
Max Charge Current	50 A
Standard Discharge Current	50 A
Max Continuous Discharge Current	100 A
Peak Discharge Current	250 A (for 1.5 seconds)
Internal Resistance of Battery	< 20 mΩ

**Note:** Specifications are subject to change during the detailed engineering

## Environmental Conditions:

Parameters	Specifications
Operating Temperature Range	Charge: 0°C to 45°C
	Discharge: -20°C to 60°C
Storage Temperature Range	0°C to 45°C
Humidity Range	5% - 95% RH (Non-condensing)
Cooling	Natural Air/Forced Air (Optional)

**Note:** Always use an inverter with CC/CV charging profile that is compatible with Lithium batteries as per the specified voltage and current parameters. Recommended upper & lower cut-off voltage.



**Fast Charging:**  
Supports high current charging



**Safety:**  
Built-in multiple protection mechanisms



**Lightweight & Compact Design**



**Zero Maintenance:**  
No regular maintenance required



**Eco-Friendly:**  
No toxic materials used



**High Efficiency:**  
Low internal resistance and high energy conversion efficiency

## Applications

RESIDENTIAL INVERTERS

HOUSEHOLD UPS INVERTERS



COMPUTER



AIR COOLER



LED TV



LED BULB



FAN



TUBE LIGHT

Used to Run Household Loads.



**RECOMMENDED FOR LITHIUM BATTERY COMPATIBLE INVERTERS OF THE SAME VOLTAGE RATINGS.**



## Protection:

Parameters	Specifications
Overcharge Protection	Yes
Over-discharge Protection	Yes
Over-current Protection	Yes
Short Circuit Protection	Yes
Temperature Protection	Yes
Balance Function	Optional

**MICROTEK INTERNATIONAL PVT. LTD.**

H-57, Udyog Nagar, Main Rohtak Road, New Delhi-110041, India E-mail: cc@microtek.in



## CHOOSE THE SMART ENERGY STORAGE SOLUTION



VS



S.No.	Parameter	*Lead Acid Battery (12V - 160Ah)	Lithium Ferro Phosphate (LFP) Battery (12.8V - 100Ah)
1	Battery Type	Tubular Lead Acid	LiFePO <sub>4</sub> (Lithium Ferro Phosphate)
2	Usable Capacity	~80 - 90Ah (50 - 60% DOD)	~95 - 100Ah (up to 100% DOD)
3	Cycle Life	~ 600 - 800 cycles	3500+ cycles
4	Charging Time	12 - 15 hours	3 - 4 hours
5	Weight	~55 - 60 kg	~13 - 14 kg
6	Size (approx.)	Larger & bulky	Compact & lightweight, Wall Mounted
7	Efficiency	60 - 75%	90 - 95%
8	Self - Discharge Rate	4 - 5% per month	<2% per month
9	Maintenance	Requires Regular Maintenance.	Zero Maintenance
10	Environmental Impact	Contains lead & acid (toxic)	Environment Friendly, Pollution Free in Usage
11	Safety	Risk of acid spill, gas emission	In-built BMS, No Leakage
12	Total Cost of Ownership	Become expensive over time	Saves money over time
13	Cost	Recurring expense	One-time quality investment
14	Peukert's Constant (k)	Capacity drops significantly at higher discharge rates	Capacity is nearly constant across discharge rates
		160Ah battery may give only ~80Ah at high load	100Ah still delivers ~95 - 100Ah even at high load

\*This Comparison reflects general behavior and may differ in field use.  
\*Above comparison ratings may vary depending on the Product design.



Technology



Power &  
Weight



Lifespan



Temperature



Eco Impact



Cost



Maintenance